

# Inspection Report

<b>Company Name</b> LB of Hounslow	<b>Scheduled Start Date</b> 01/05/2025	<b>Inspection Completed on</b> 02/05/2025
<b>Location of Inspection</b> Cottington Road (ESTORIE)	<b>Scheduled Time of Inspection</b> 10:41 AM	<b>Inspection Submission Time</b> 5:26 PM
<b>Inspector that undertook inspection</b> Asha Sharma	<b>Template Used</b> Estate Inspection	<b>PDF Sent to</b> asha.sharma@hounslow.gov.uk

## Inspection Score and Overall Grade

<b>Actual Score</b> 13	<b>Max Score</b> 16	<b>Inspection %</b> 81
<b>Banding Name</b> Default Banding	<b>Overall Inspection Result</b> Default Banding Item	

## 1 Inspection Details

<b>1.1 - Question</b> Type of Inspection	<b>1.1 - Responses</b> Quarterly	
<b>1.2 - Question</b> Area	<b>1.2 - Responses</b> West	
<b>1.3 - Question</b> How many blocks are you inspecting in the estate today?	<b>1.3 - Responses</b> 12	


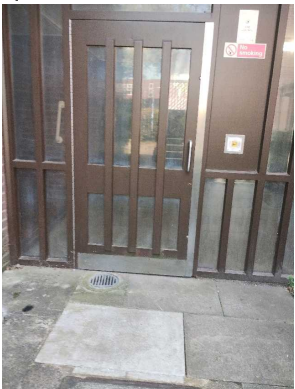

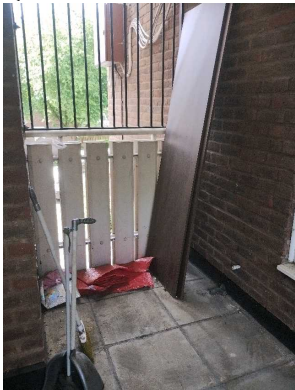
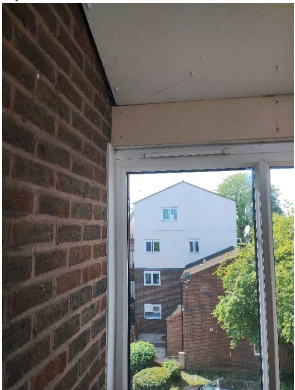

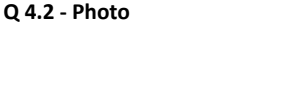
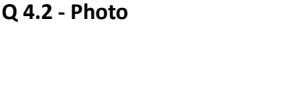
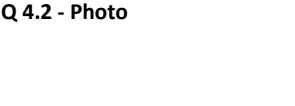
## 2 Block 1

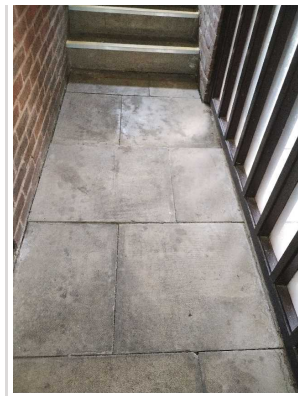
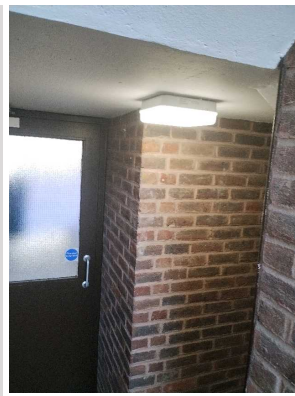
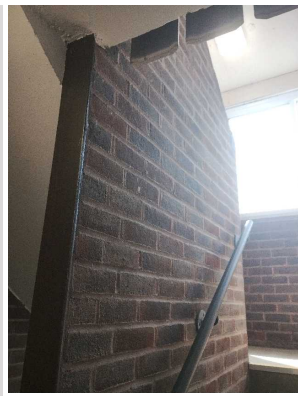
<b>2.1 - Question</b> Please state the name of the block you are inspecting	<b>2.1 - Responses</b> 1-19 Metcalf walk	<b>2.1 - Comments</b> 02/05/2025 Relay broken slabs X2 and relay concrete around manhole cover at the entrance to Metcalf Walk.
<b>2.2 - Question</b> Please confirm you have checked everything at this block?	<b>2.2 - Responses</b> Y	
<b>2.3 - Question</b> Are there any issues to raise at this block?	<b>2.3 - Responses</b> N	

## 3 Block 2

<b>3.1 - Question</b> Please state the name of the block you are inspecting	<b>3.1 - Responses</b> Cottington Road	
<b>3.2 - Question</b> Please confirm you have checked everything at this block?	<b>3.2 - Responses</b> Y	<b>3.2 - Comments</b> 01/05/2025 Uneven surface at the entrance to the underground garage area. <b>3.2 - Comments</b>

		02/05/2025 Uneven surface at the entrance to car park to Gabriel Close.
<b>Q 3.2 - Photo</b> 	<b>Q 3.2 - Photo</b> 	
<b>3.3 - Question</b> Are there any issues to raise at this block?	<b>3.3 - Responses</b> N	

4 Block 3		
<b>4.1 - Question</b> Please state the name of the block you are inspecting	<b>4.1 - Responses</b> 2-11 Cottingham Rd	
<b>4.2 - Question</b> Please confirm you have checked everything at this block?	<b>4.2 - Responses</b> Y	
<b>Q 4.2 - Photo</b> 	<b>Q 4.2 - Photo</b> 	<b>Q 4.2 - Photo</b> 
<b>Q 4.2 - Photo</b> 	<b>Q 4.2 - Photo</b> 	<b>Q 4.2 - Photo</b> 
<b>Q 4.2 - Photo</b> 	<b>Q 4.2 - Photo</b> 	<b>Q 4.2 - Photo</b> 





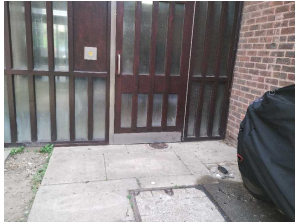
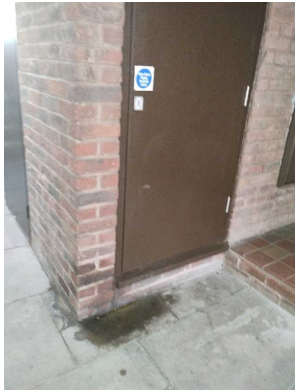

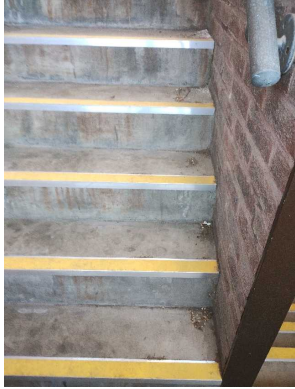
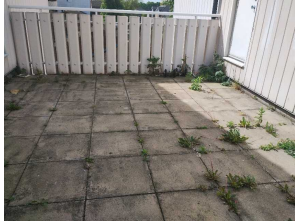



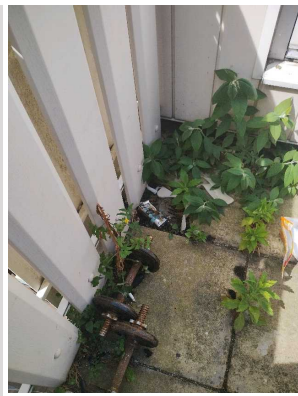
<b>4.3 - Question</b> Are there any issues to raise at this block?	<b>4.3 - Responses</b> Y	
<b>4.4 - Question</b> Are there any Ground Maintenance Issues?	<b>4.4 - Responses</b> N	
<b>4.11 - Question</b> Are there any Internal Caretaking issues?	<b>4.11 - Responses</b> Y	
<b>4.12 - Question</b> Are there any Cleanliness: Stairs issues?	<b>4.12 - Responses</b> Y	<b>4.12 - Comments</b> 01/05/2025 Cobwebs around ceiling lights. Stairwells were not clean at the time inspection.
<b>4.13 - Question</b> Are there any Landings issues?	<b>4.13 - Responses</b> Y	<b>4.13 - Comments</b> 02/05/2025 Washing lines in the communal landings.
<b>4.14 - Question</b> Are there any Entrances issues?	<b>4.14 - Responses</b> N	
<b>4.15 - Question</b> Are there any Lifts issues?	<b>4.15 - Responses</b> N	
<b>4.16 - Question</b> Are there any Door and Window Glazing issues?	<b>4.16 - Responses</b> N	<b>4.16 - Comments</b> 01/05/2025 Ext windows to be cleaned.
<b>4.17 - Question</b> Are there any Ledges issues?	<b>4.17 - Responses</b> N	
<b>4.18 - Question</b> Are there any Walls issues?	<b>4.18 - Responses</b> N	
<b>4.19 - Question</b> Are there any Lighting issues?	<b>4.19 - Responses</b> N	
<b>4.20 - Question</b> Are there any Handrails secure issues?	<b>4.20 - Responses</b> N	
<b>4.21 - Question</b> Are there any Chute Rooms issues?	<b>4.21 - Responses</b> N	
<b>4.22 - Question</b> Are there any Signage issues?	<b>4.22 - Responses</b> N	
<b>4.23 - Question</b> Are there any Graffiti issues?	<b>4.23 - Responses</b> N	
<b>4.24 - Question</b> Are there any issues with cleaning completion sheets?	<b>4.24 - Responses</b> N	
<b>4.25 - Question</b> Are there any issues with Notice Boards?	<b>4.25 - Responses</b> N	
<b>4.26 - Question</b>	<b>4.26 - Responses</b> Y	

Are there any External Caretaking issues?		
<b>4.27 - Question</b> Are there any Cleanliness: Grassed Areas issues?	<b>4.27 - Responses</b> N	
<b>4.28 - Question</b> Are there any Paved Areas issues?	<b>4.28 - Responses</b> Y	<b>4.28 - Comments</b> 01/05/2025 Front and rear entrances were not clean at the time of inspection.
<b>4.29 - Question</b> Are there any Car Parks issues?	<b>4.29 - Responses</b> N	
<b>4.30 - Question</b> Are there any Play Areas (Cleanliness, condition of play equipment, surfaces and fencing) issues?	<b>4.30 - Responses</b> N	
<b>4.31 - Question</b> Are there any Litter Picking issues?	<b>4.31 - Responses</b> N	
<b>4.32 - Question</b> Are there any Bin Rooms issues?	<b>4.32 - Responses</b> N	
<b>4.33 - Question</b> Are there any Bulk Refuse and Graffiti issues?	<b>4.33 - Responses</b> N	
<b>4.34 - Question</b> Are there any Signs issues?	<b>4.34 - Responses</b> N	
<b>4.35 - Question</b> Are there any Numberings issues?	<b>4.35 - Responses</b> N	
<b>4.36 - Question</b> Are there any Notice Boards issues?	<b>4.36 - Responses</b> N	
<b>4.37 - Question</b> Are there any Communal Issues?	<b>4.37 - Responses</b> Y	<b>4.37 - Comments</b> 01/05/2025 Washing line in the communal landing.
<b>4.38 - Question</b> Are there any Abandoned Vehicles?	<b>4.38 - Responses</b> N	
<b>4.39 - Question</b> Are there any Street Lighting Issues?	<b>4.39 - Responses</b> N	
<b>4.40 - Question</b> Are there any Pot holes?	<b>4.40 - Responses</b> N	
<b>4.41 - Question</b> Are there any issues with the Cleanliness of roads/car parks?	<b>4.41 - Responses</b> N	
<b>4.42 - Question</b> Are the notice boards are up to date?	<b>4.42 - Responses</b> Y	
<b>4.43 - Question</b> Is there any old signage to report?	<b>4.43 - Responses</b> N	
<b>4.44 - Question</b> Are there any Items stored in drying areas?	<b>4.44 - Responses</b> N	
<b>4.45 - Question</b> Are there any Items stored in Communal areas?	<b>4.45 - Responses</b> N	
<b>4.46 - Question</b> Is the roof access doors locked?	<b>4.46 - Responses</b> Y	
<b>4.47 - Question</b> Are there any Bulk rubbish items?	<b>4.47 - Responses</b> N	
<b>4.48 - Question</b> Are there any Untidy gardens?	<b>4.48 - Responses</b> N	
<b>4.57 - Question</b>	<b>4.57 - Responses</b>	



Are there Communal Repairs to raise?	N	
--------------------------------------	---	--


5 Block 4		
<b>5.1 - Question</b> Please state the name of the block you are inspecting	<b>5.1 - Responses</b> 83-93 Cottington Road	
<b>5.2 - Question</b> Please confirm you have checked everything at this block?	<b>5.2 - Responses</b> Y	
<b>5.3 - Question</b> Are there any issues to raise at this block?	<b>5.3 - Responses</b> Y	
<b>Q 5.3 - Photo</b> 	<b>Q 5.3 - Photo</b> 	<b>Q 5.3 - Photo</b> 
<b>Q 5.3 - Photo</b> 	<b>Q 5.3 - Photo</b> 	<b>Q 5.3 - Photo</b> 
<b>Q 5.3 - Photo</b> 	<b>Q 5.3 - Photo</b> 	<b>Q 5.3 - Photo</b> 
<b>Q 5.3 - Photo</b> 		

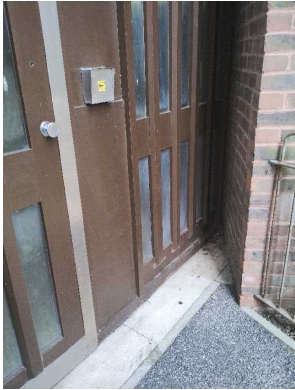







<b>5.4 - Question</b> Are there any Ground Maintenance Issues?	<b>5.4 - Responses</b> N	
<b>5.11 - Question</b> Are there any Internal Caretaking issues?	<b>5.11 - Responses</b> N	
<b>5.26 - Question</b> Are there any External Caretaking issues?	<b>5.26 - Responses</b> Y	<b>5.26 - Comments</b> 01/05/2025 front and rear door and entrances were not clean at the time of inspection.
<b>5.27 - Question</b> Are there any Cleanliness: Grassed Areas issues?	<b>5.27 - Responses</b> N	
<b>5.28 - Question</b> Are there any Paved Areas issues?	<b>5.28 - Responses</b> N	
<b>5.29 - Question</b> Are there any Car Parks issues?	<b>5.29 - Responses</b> N	
<b>5.30 - Question</b> Are there any Play Areas (Cleanliness, condition of play equipment, surfaces and fencing) issues?	<b>5.30 - Responses</b> N	
<b>5.31 - Question</b> Are there any Litter Picking issues?	<b>5.31 - Responses</b> N	
<b>5.32 - Question</b> Are there any Bin Rooms issues?	<b>5.32 - Responses</b> N	
<b>5.33 - Question</b> Are there any Bulk Refuse and Graffiti issues?	<b>5.33 - Responses</b> Y	<b>5.33 - Comments</b> 02/05/2025 Bulk items being left in the communal bin area.
<b>5.34 - Question</b> Are there any Signs issues?	<b>5.34 - Responses</b> N	
<b>5.35 - Question</b> Are there any Numberings issues?	<b>5.35 - Responses</b> N	
<b>5.36 - Question</b> Are there any Notice Boards issues?	<b>5.36 - Responses</b> N	
<b>5.37 - Question</b> Are there any Communal Issues?	<b>5.37 - Responses</b> N	
<b>5.49 - Question</b> Are there any Fire Risk Issues?	<b>5.49 - Responses</b> N	
<b>5.57 - Question</b> Are there Communal Repairs to raise?	<b>5.57 - Responses</b> N	

## 6 Block 5

<b>6.1 - Question</b>	<b>6.1 - Responses</b> 19-27 Cottington Road	<b>6.1 - Comments</b>
-----------------------	---	-----------------------

Please state the name of the block you are inspecting	02/05/2025 Personal items and washing lines in the communal area.	
<b>Q 6.1 - Photo</b> 		
<b>6.2 - Question</b> Please confirm you have checked everything at this block?	<b>6.2 - Responses</b> Y	
<b>6.3 - Question</b> Are there any issues to raise at this block?	<b>6.3 - Responses</b> N	

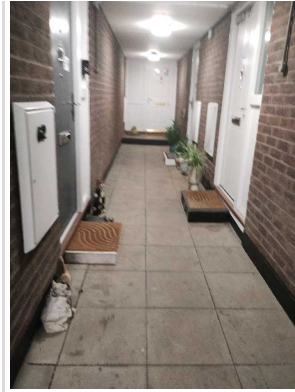
7 Block 6		
<b>7.1 - Question</b> Please state the name of the block you are inspecting	<b>7.1 - Responses</b> 28-39 Cottington Road	
<b>7.2 - Question</b> Please confirm you have checked everything at this block?	<b>7.2 - Responses</b> Y	<b>7.2 - Comments</b> 01/05/2025 Blocked drains and downpipes In front and rear of the block.
<b>Q 7.2 - Photo</b> 	<b>Q 7.2 - Photo</b> 	<b>Q 7.2 - Photo</b> 
<b>Q 7.2 - Photo</b> 	<b>Q 7.2 - Photo</b> 	<b>Q 7.2 - Photo</b> 

<b>7.3 - Question</b> Are there any issues to raise at this block?	<b>7.3 - Responses</b> Y	
<b>7.4 - Question</b> Are there any Ground Maintenance Issues?	<b>7.4 - Responses</b> N	
<b>7.11 - Question</b> Are there any Internal Caretaking issues?	<b>7.11 - Responses</b> N	
<b>7.26 - Question</b> Are there any External Caretaking issues?	<b>7.26 - Responses</b> Y	<b>7.26 - Comments</b> 02/05/2025 Front and rear doors and entrances were not clean at the time of inspection.
<b>7.27 - Question</b> Are there any Cleanliness: Grassed Areas issues?	<b>7.27 - Responses</b> N	
<b>7.28 - Question</b> Are there any Paved Areas issues?	<b>7.28 - Responses</b> N	
<b>7.29 - Question</b> Are there any Car Parks issues?	<b>7.29 - Responses</b> N	
<b>7.30 - Question</b> Are there any Play Areas (Cleanliness, condition of play equipment, surfaces and fencing) issues?	<b>7.30 - Responses</b> N	
<b>7.31 - Question</b> Are there any Litter Picking issues?	<b>7.31 - Responses</b> N	
<b>7.32 - Question</b> Are there any Bin Rooms issues?	<b>7.32 - Responses</b> N	
<b>7.33 - Question</b> Are there any Bulk Refuse and Graffiti issues?	<b>7.33 - Responses</b> N	
<b>7.34 - Question</b> Are there any Signs issues?	<b>7.34 - Responses</b> N	
<b>7.35 - Question</b> Are there any Numberings issues?	<b>7.35 - Responses</b> N	
<b>7.36 - Question</b> Are there any Notice Boards issues?	<b>7.36 - Responses</b> N	
<b>7.37 - Question</b> Are there any Communal Issues?	<b>7.37 - Responses</b> N	
<b>7.49 - Question</b> Are there any Fire Risk Issues?	<b>7.49 - Responses</b> N	
<b>7.57 - Question</b> Are there Communal Repairs to raise?	<b>7.57 - Responses</b> N	

## 8 Block 7

<b>8.1 - Question</b> Please state the name of the block you are inspecting	<b>8.1 - Responses</b> 40-79 Cottington rd	
<b>8.2 - Question</b> Please confirm you have checked everything at this block?	<b>8.2 - Responses</b> Y	<b>8.2 - Comments</b> 02/05/2025 Motorbike parked inside the block outside flat 44.
<b>Q 8.2 - Photo</b>	<b>Q 8.2 - Photo</b>	<b>Q 8.2 - Photo</b>





**Q 8.2 - Photo**



<b>8.3 - Question</b> Are there any issues to raise at this block?	<b>8.3 - Responses</b> Y	
<b>8.4 - Question</b> Are there any Ground Maintenance Issues?	<b>8.4 - Responses</b> N	
<b>8.11 - Question</b> Are there any Internal Caretaking issues?	<b>8.11 - Responses</b> N	
<b>8.26 - Question</b> Are there any External Caretaking issues?	<b>8.26 - Responses</b> N	
<b>8.37 - Question</b> Are there any Communal Issues?	<b>8.37 - Responses</b> Y	
<b>8.38 - Question</b> Are there any Abandoned Vehicles?	<b>8.38 - Responses</b> N	
<b>8.39 - Question</b> Are there any Street Lighting Issues?	<b>8.39 - Responses</b> N	
<b>8.40 - Question</b> Are there any Pot holes?	<b>8.40 - Responses</b> N	
<b>8.41 - Question</b> Are there any issues with the Cleanliness of roads/car parks?	<b>8.41 - Responses</b> N	
<b>8.42 - Question</b> Are the notice boards are up to date?	<b>8.42 - Responses</b> Y	
<b>8.43 - Question</b> Is there any old signage to report?	<b>8.43 - Responses</b> N	
<b>8.44 - Question</b> Are there any Items stored in drying areas?	<b>8.44 - Responses</b> Y	
<b>8.45 - Question</b>	<b>8.45 - Responses</b> Y	<b>8.45 - Comments</b>


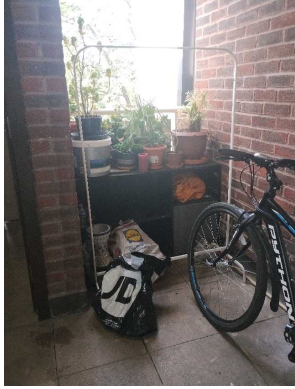
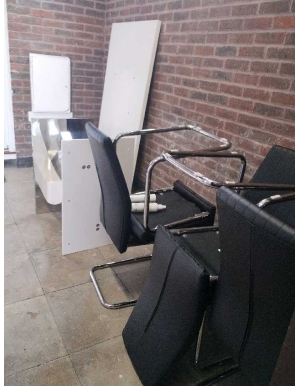
Are there any Items stored in Communal areas?		02/05/2025 Personal items in the communal walkway outside flats.
<b>8.46 - Question</b> Is the roof access doors locked?	<b>8.46 - Responses</b> Y	
<b>8.47 - Question</b> Are there any Bulk rubbish items?	<b>8.47 - Responses</b> N	
<b>8.48 - Question</b> Are there any Untidy gardens?	<b>8.48 - Responses</b> N	
<b>8.49 - Question</b> Are there any Fire Risk Issues?	<b>8.49 - Responses</b> N	
<b>8.57 - Question</b> Are there Communal Repairs to raise?	<b>8.57 - Responses</b> N	



### 9 Block 8

<b>9.1 - Question</b> Please state the name of the block you are inspecting	<b>9.1 - Responses</b> 2-11Gabrial Close	
<b>9.2 - Question</b> Please confirm you have checked everything at this block?	<b>9.2 - Responses</b> Y	
<b>9.3 - Question</b> Are there any issues to raise at this block?	<b>9.3 - Responses</b> Y	
<b>9.4 - Question</b> Are there any Ground Maintenance Issues?	<b>9.4 - Responses</b> N	
<b>9.11 - Question</b> Are there any Internal Caretaking issues?	<b>9.11 - Responses</b> N	
<b>9.26 - Question</b> Are there any External Caretaking issues?	<b>9.26 - Responses</b> N	
<b>9.37 - Question</b> Are there any Communal Issues?	<b>9.37 - Responses</b> N	<b>9.37 - Comments</b> 02/05/2025 Bulk items stored in the communal landings.
<b>9.49 - Question</b> Are there any Fire Risk Issues?	<b>9.49 - Responses</b> N	
<b>9.57 - Question</b> Are there Communal Repairs to raise?	<b>9.57 - Responses</b> N	

### 10 Block 9

<b>10.1 - Question</b> Please state the name of the block you are inspecting	<b>10.1 - Responses</b> 24-32 Gabriel Close	
<b>10.2 - Question</b> Please confirm you have checked everything at this block?	<b>10.2 - Responses</b> Y	<b>10.2 - Comments</b> 01/05/2025 Personal items in the communal landing.
<b>Q 10.2 - Photo</b>	<b>Q 10.2 - Photo</b>	<b>Q 10.2 - Photo</b>


		
<b>10.3 - Question</b> Are there any issues to raise at this block?	<b>10.3 - Responses</b> N	

11 Block 10		
<b>11.1 - Question</b> Please state the name of the block you are inspecting	<b>11.1 - Responses</b> 12-17 Dunmow Close	
<b>11.2 - Question</b> Please confirm you have checked everything at this block?	<b>11.2 - Responses</b> Y	<b>11.2 - Comments</b> 01/05/2025 Relay broken slab on the path by the lamppost no 22. Relay a sunken slab outside 17 Dunmow Close .
<b>Q 11.2 - Photo</b> 	<b>Q 11.2 - Photo</b> 	
<b>11.3 - Question</b> Are there any issues to raise at this block?	<b>11.3 - Responses</b> N	

12 Block 11		
<b>12.1 - Question</b> Please state the name of the block you are inspecting	<b>12.1 - Responses</b> 2-11 Dunmow Close	
<b>12.2 - Question</b> Please confirm you have checked everything at this block?	<b>12.2 - Responses</b> Y	
<b>12.3 - Question</b> Are there any issues to raise at this block?	<b>12.3 - Responses</b> Y	
<b>12.4 - Question</b> Are there any Ground Maintenance Issues?	<b>12.4 - Responses</b> N	

<b>12.11 - Question</b> Are there any Internal Caretaking issues?	<b>12.11 - Responses</b> N	
<b>12.26 - Question</b> Are there any External Caretaking issues?	<b>12.26 - Responses</b> N	
<b>12.37 - Question</b> Are there any Communal Issues?	<b>12.37 - Responses</b> N	
<b>12.49 - Question</b> Are there any Fire Risk Issues?	<b>12.49 - Responses</b> N	
<b>12.57 - Question</b> Are there Communal Repairs to raise?	<b>12.57 - Responses</b> Y	<b>12.57 - Comments</b> 02/05/2025 Rejoin the broken piece of downpipe above front door.
<b>12.58 - Question</b> Are there any Communal lighting repairs?	<b>12.58 - Responses</b> N	
<b>12.59 - Question</b> Are there any Window repairs?	<b>12.59 - Responses</b> N	
<b>12.60 - Question</b> Are there any Door Handles and Closures repairs?	<b>12.60 - Responses</b> N	
<b>12.61 - Question</b> Are there any Drying Areas repairs?	<b>12.61 - Responses</b> N	
<b>12.62 - Question</b> Are there any Electrical Cupboard Doors repairs?	<b>12.62 - Responses</b> N	
<b>12.63 - Question</b> Are there any Garage Area repairs?	<b>12.63 - Responses</b> N	
<b>12.64 - Question</b> Are there any Graffiti repairs?	<b>12.64 - Responses</b> N	
<b>12.65 - Question</b> Are there any Vandalism repairs?	<b>12.65 - Responses</b> N	
<b>12.66 - Question</b> Are there any Laundry room repairs?	<b>12.66 - Responses</b> N	
<b>12.67 - Question</b> Are there any Flooring repairs?	<b>12.67 - Responses</b> N	

### 13 Block 12

<b>13.1 - Question</b> Please state the name of the block you are inspecting	<b>13.1 - Responses</b> 39-56 Dunmow Close	
<b>13.2 - Question</b> Please confirm you have checked everything at this block?	<b>13.2 - Responses</b> Y	<b>13.2 - Comments</b> 02/05/2025 Bulk items being stored in the shrub beds in the car park.
<b>Q 13.2 - Photo</b>	<b>Q 13.2 - Photo</b>	<b>Q 13.2 - Photo</b> 





**Q 13.2 - Photo**



**Q 13.2 - Photo**



**Q 13.2 - Photo**



**Q 13.2 - Photo**



**13.3 - Question**  
Are there any issues to raise at this block?

**13.3 - Responses**  
N

## 17 Overall Estate Rating

**17.1 - Question**  
Please rate the overall Grounds Maintenance of the estate

**17.1 - Responses**  
A

**17.2 - Question**  
Please rate the overall Internal Caretaking of the estate

**17.2 - Responses**  
B

**17.3 - Question**  
Please rate the overall External Caretaking of the estate

**17.3 - Responses**  
B

**17.4 - Question**  
Please rate the overall Communal Issues of the estate

**17.4 - Responses**  
B

