

Inspection Report

Company Name LB of Hounslow	Scheduled Start Date 09/04/2025	Inspection Completed on 09/04/2025
Location of Inspection Cornish House 1 To 88	Scheduled Time of Inspection 10:44 AM	Inspection Submission Time 2:42 PM
Inspector that undertook inspection Nathan Stradling	Template Used Estate Inspection	PDF Sent to nathan.stradling1@hounslow.gov.uk


Inspection Score and Overall Grade		
Actual Score	Max Score	Inspection %
14	16	87
Banding Name Default Banding	Overall Inspection Result Default Banding Item	

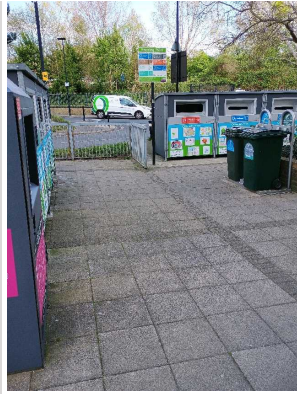
1 Inspection Details		
1.1 - Question Type of Inspection	1.1 - Responses Quarterly	
1.2 - Question Area	1.2 - Responses East	
1.3 - Question How many blocks are you inspecting in the estate today?	1.3 - Responses 1	

2 Block 1		
2.1 - Question Please state the name of the block you are inspecting	2.1 - Responses Cornish house	
2.2 - Question Please confirm you have checked everything at this block?	2.2 - Responses Y	
2.3 - Question Are there any issues to raise at this block?	2.3 - Responses Y	
2.4 - Question Are there any Ground Maintenance Issues?	2.4 - Responses N	2.4 - Comments 09/04/2025 Areas around Cornish house are all cut back and looking neat and tidy
Q 2.4 - Photo		

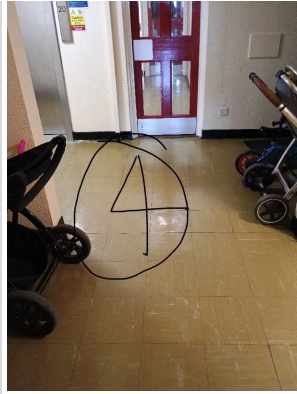


2.11 - Question Are there any Internal Caretaking issues?	2.11 - Responses Y	
2.12 - Question Are there any Cleanliness: Stairs issues?	2.12 - Responses N	
2.13 - Question Are there any Landings issues?	2.13 - Responses N	
2.14 - Question Are there any Entrances issues?	2.14 - Responses N	
2.15 - Question Are there any Lifts issues?	2.15 - Responses N	
2.16 - Question Are there any Door and Window Glazing issues?	2.16 - Responses N	
2.17 - Question Are there any Ledges issues?	2.17 - Responses N	
2.18 - Question Are there any Walls issues?	2.18 - Responses N	
2.19 - Question Are there any Lighting issues?	2.19 - Responses N	
2.20 - Question Are there any Handrails secure issues?	2.20 - Responses N	
2.21 - Question Are there any Chute Rooms issues?	2.21 - Responses N	
2.22 - Question Are there any Signage issues?	2.22 - Responses Y	2.22 - Comments 09/04/2025 photo 3 fire exit sign missing on stairwell between 21 and 22 2.22 - Comments 09/04/2025 fire exit sign missing on stairwell between 20 and 21 2.22 - Comments 09/04/2025 Photo 6. Floor 4 stairwell fire exit sign missing
Q 2.22 - Photo	Q 2.22 - Photo	Q 2.22 - Photo



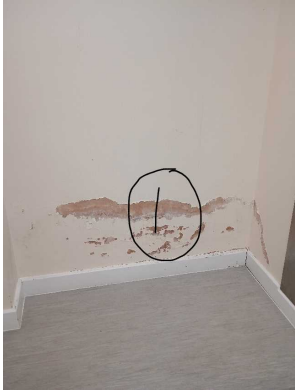
		
<p>Q 2.22 - Photo</p> 	<p>Q 2.22 - Photo</p> 	<p>Q 2.22 - Photo</p> 
<p>Q 2.22 - Photo</p> 		
<p>2.23 - Question Are there any Graffiti issues?</p>	<p>2.23 - Responses N</p>	
<p>2.24 - Question Are there any issues with cleaning completion sheets?</p>	<p>2.24 - Responses N</p>	
<p>2.25 - Question Are there any issues with Notice Boards?</p>	<p>2.25 - Responses N</p>	
<p>2.26 - Question Are there any External Caretaking issues?</p>	<p>2.26 - Responses N</p>	<p>2.26 - Comments 09/04/2025 Area clean and tidy</p>
<p>Q 2.26 - Photo</p>		



2.37 - Question Are there any Communal Issues?	2.37 - Responses Y	
2.38 - Question Are there any Abandoned Vehicles?	2.38 - Responses N	
2.39 - Question Are there any Street Lighting Issues?	2.39 - Responses N	
2.40 - Question Are there any Pot holes?	2.40 - Responses N	
2.41 - Question Are there any issues with the Cleanliness of roads/car parks?	2.41 - Responses N	
2.42 - Question Are the notice boards are up to date?	2.42 - Responses Y	
2.43 - Question Is there any old signage to report?	2.43 - Responses N	
2.44 - Question Are there any Items stored in drying areas?	2.44 - Responses N	
2.45 - Question Are there any Items stored in Communal areas?	2.45 - Responses Y	2.45 - Comments 09/04/2025 photo 4 items in communal area on floor 20 2.45 - Comments 09/04/2025 Floor 17 flat 68 items outside by door in communal area 2.45 - Comments 09/04/2025 Floor 16 to monitor. Items in communal area but residents are putting down flooring. 2.45 - Comments 09/04/2025 floor 11 - to monitor. Resident is having works done to property and items in communal area 2.45 - Comments 09/04/2025 floor 5 to monitor. K & B being fitted
Q 2.45 - Photo		



2.46 - Question Is the roof access doors locked?	2.46 - Responses Y	
2.47 - Question Are there any Bulk rubbish items?	2.47 - Responses N	
2.48 - Question Are there any Untidy gardens?	2.48 - Responses N	
2.49 - Question Are there any Fire Risk Issues?	2.49 - Responses Y	
2.50 - Question Are the Fire Doors in place and closing mechanisms checked?	2.50 - Responses Y	
2.51 - Question Are the Fire Extinguishers in place?	2.51 - Responses N	2.51 - Comments 09/04/2025 No fire extinguishers on site
2.52 - Question Are the Electrical Cupboards locked?	2.52 - Responses Y	
2.53 - Question Are the Bin chute fire stoppers/blanking plates in place?	2.53 - Responses N	2.53 - Comments 09/04/2025 bin chutes have been decommissioned
2.54 - Question Have the Dry Risers been checked?	2.54 - Responses Y	
2.55 - Question Has the firefighting equipment been checked (where applicable)?	2.55 - Responses Y	
2.56 - Question Have you checked access with a fire drop key?	2.56 - Responses Y	
2.57 - Question Are there Communal Repairs to raise?	2.57 - Responses Y	
2.58 - Question Are there any Communal lighting repairs?	2.58 - Responses N	
2.59 - Question Are there any Window repairs?	2.59 - Responses N	
2.60 - Question Are there any Door Handles and Closures repairs?	2.60 - Responses Y	2.60 - Comments 09/04/2025 photo 2 door leading to flats not closing properly 2.60 - Comments 09/04/2025 photo 5 floor 6 leading to flats. Instrumiscnt strip is missing
Q 2.60 - Photo	Q 2.60 - Photo	Q 2.60 - Photo

		
2.61 - Question Are there any Drying Areas repairs?	2.61 - Responses N	
2.62 - Question Are there any Electrical Cupboard Doors repairs?	2.62 - Responses N	
2.63 - Question Are there any Garage Area repairs?	2.63 - Responses N	
2.64 - Question Are there any Graffiti repairs?	2.64 - Responses N	
2.65 - Question Are there any Vandalism repairs?	2.65 - Responses N	
2.66 - Question Are there any Laundry room repairs?	2.66 - Responses N	
2.67 - Question Are there any Flooring repairs?	2.67 - Responses Y	2.67 - Comments 09/04/2025 photo one in communal area by flats one a and b - wall needs sorting out
Q 2.67 - Photo 		

17 Overall Estate Rating

17.1 - Question Please rate the overall Grounds Maintenance of the estate	17.1 - Responses A	
17.2 - Question Please rate the overall Internal Caretaking of the estate	17.2 - Responses B	
17.3 - Question Please rate the overall External Caretaking of the estate	17.3 - Responses A	
17.4 - Question Please rate the overall Communal Issues of the estate	17.4 - Responses B	

