






Inspection Report

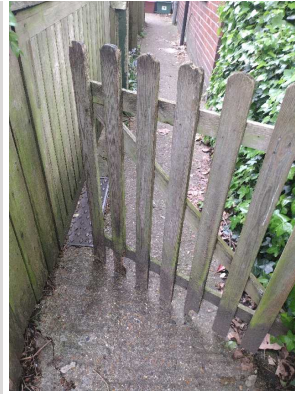
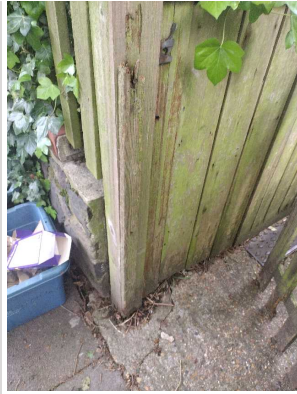
Company Name LB of Hounslow	Scheduled Start Date 24/04/2025	Inspection Completed on 30/04/2025
Location of Inspection Burlington Lane (ESTBULA)	Scheduled Time of Inspection 10:08 AM	Inspection Submission Time 7:44 AM
Inspector that undertook inspection Harkiran Nandra	Template Used Estate Inspection	PDF Sent to harkiran.nandra@hounslow.gov.uk,Stefan.Nor@Hounslow.gov.uk

Inspection Score and Overall Grade		
Actual Score	Max Score	Inspection %
12	16	75
Banding Name Default Banding	Overall Inspection Result Default Banding Item	



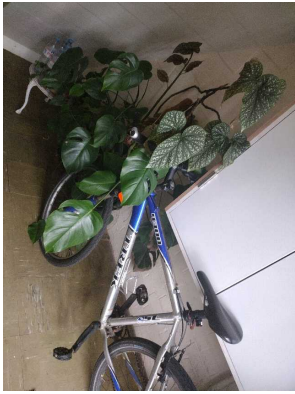
1 Inspection Details		
1.1 - Question Type of Inspection	1.1 - Responses Quarterly	
1.2 - Question Area	1.2 - Responses East	
1.3 - Question How many blocks are you inspecting in the estate today?	1.3 - Responses 2	

2 Block 1		
2.1 - Question Please state the name of the block you are inspecting	2.1 - Responses 19 - 25 Burlington Lane	
2.2 - Question Please confirm you have checked everything at this block?	2.2 - Responses Y	
2.3 - Question Are there any issues to raise at this block?	2.3 - Responses Y	
2.11 - Question Are there any Internal Caretaking issues?	2.11 - Responses Y	
2.13 - Question Are there any Landings issues?	2.13 - Responses Y	2.13 - Comments 24/04/2025 landings and stairs dusty.
Q 2.13 - Photo		

		
2.14 - Question Are there any Entrances issues?	2.14 - Responses Y	2.14 - Comments 24/04/2025 entrance dusty and debries and cobwebs
Q 2.14 - Photo 	Q 2.14 - Photo 	Q 2.14 - Photo 
2.17 - Question Are there any Ledges issues?	2.17 - Responses Y	2.17 - Comments 24/04/2025 dusty ledges requires a wipe.
Q 2.17 - Photo 		
2.26 - Question Are there any External Caretaking issues?	2.26 - Responses Y	
2.28 - Question Are there any Paved Areas issues?	2.28 - Responses Y	
2.57 - Question Are there Communal Repairs to raise?	2.57 - Responses Y	2.57 - Comments 24/04/2025 rotten gate needs replacing.
Q 2.57 - Photo	Q 2.57 - Photo	



3 Block 2		
3.1 - Question Please state the name of the block you are inspecting	3.1 - Responses 27-33 Burlington lane.	
3.2 - Question Please confirm you have checked everything at this block?	3.2 - Responses Y	
3.3 - Question Are there any issues to raise at this block?	3.3 - Responses Y	
3.4 - Question Are there any Ground Maintenance Issues?	3.4 - Responses Y	3.4 - Comments 24/04/2025 overgrown weeds and bags present.
Q 3.4 - Photo 	Q 3.4 - Photo 	
3.11 - Question Are there any Internal Caretaking issues?	3.11 - Responses Y	
3.12 - Question Are there any Cleanliness: Stairs issues?	3.12 - Responses Y	
Q 3.12 - Photo		

		
3.17 - Question Are there any Ledges issues?	3.17 - Responses Y	3.17 - Comments 24/04/2025 - dusty ledges.
Q 3.17 - Photo 		
3.37 - Question Are there any Communal Issues?	3.37 - Responses Y	
3.45 - Question Are there any Items stored in Communal areas?	3.45 - Responses Y	3.45 - Comments 24/04/2025 - items need to be removed from entrance
Q 3.45 - Photo 		

17 Overall Estate Rating		
17.1 - Question Please rate the overall Grounds Maintenance of the estate	17.1 - Responses B	
17.2 - Question Please rate the overall Internal Caretaking of the estate	17.2 - Responses B	
17.3 - Question	17.3 - Responses B	

Please rate the overall External Caretaking of the estate		
17.4 - Question Please rate the overall Communal Issues of the estate	17.4 - Responses B	